

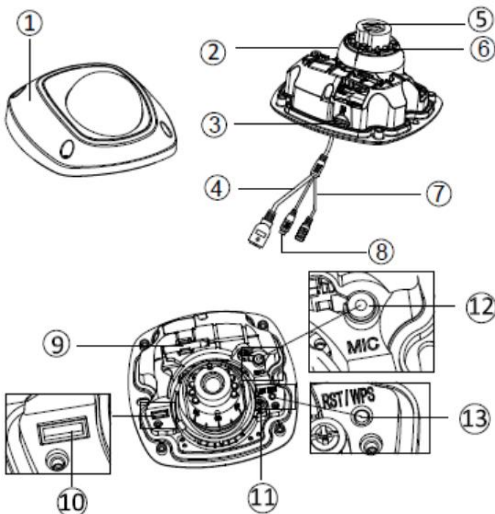
IP NETWORK CAMERA

IPMD4M-A



Features

- 4 Megapixel HD Video
- True Wide Dynamic Range
- Audio
- 33ft IR Range
- IP66 Outdoor Rated
- ONVIF Compliant
- SD Recording
- PoE



1. Front Cover
2. Dome
3. Mini SD Slot
4. Network Cable
5. Lens
6. IR LED
7. Power
8. Audio / Alarm Cables
9. Wi-Fi Antenna
10. Serial Port
11. Hex Screw
12. Mic
13. Reset

Part Number	IPMD4M-A
Resolution	4 Megapixel (2688 x 1520)
Image Sensor	1/3" progressive scan CMOS
Min. illumination	0.19lux @ F2.0, AGC on; 0 lux with IR
Shutter Time	1/30s ~ 1/100,000s
Lens	2.8mm Fix Lens
Lens Mount	M12
Day & Night	ICR
Digital Noise Reduction	3D DNR
Wide Dynamic Range	True WDR
Backlight Comp.	Yes, zone configurable
Video Compression	H.264 / MJPEG
Frame rate	60Hz: 15fps (2048 x 1536), 30fps (1920 x 1080), 30fps (1280 x 720)
Alarm Trigger	Motion detection, tampering alarm, network disconnect, IP address conflict, storage exception, storage error
Protocols	TCP/IP, HTTP, DHCP, DNS, DDNS, RTP, RTSP, PPPoE, SMTP, NTP, SNMP, HTTPS, FTP, 802.1x, Qos
System Compatibility	ONVIF, PSIA, CGI
General Functionalities	Flickerless, dual stream, heartbeat, mirror, user authentication, video mask, watermark
Comm. Interface	1 RJ45 10M / 100M ethernet port
On-board storage	Built-in Micro SD card slot, up to 64 GB
Operating conditions	-30 °C ~ 60 °C (-22 °F ~ 140 °F), humidity 95% or less (non-condensing)
Power Supply	DC12V ± 10%, PoE (802.3af)
Consumption	Max. 7W
Ingress protection level	IP66
IR Range	Up to 10m (33ft)
Dimensions	3.93" × 3.84" × 1.83"
Weight	250g (0.55 lbs)